



SHOPS OF SEDONA SPACE FOR LEASE

14000-14030 & 14100-14138 W. 135th Street, Olathe, KS




LEASE RATE: \$20-28/SF GROSS | 1,000 SF TO - 2,300 SF

DEMOGRAPHICS

	1 mile	3 miles	5 miles
Estimated Population	12,378	101,595	230,830
Avg. Household Income	\$190,666	\$148,810	\$146,467

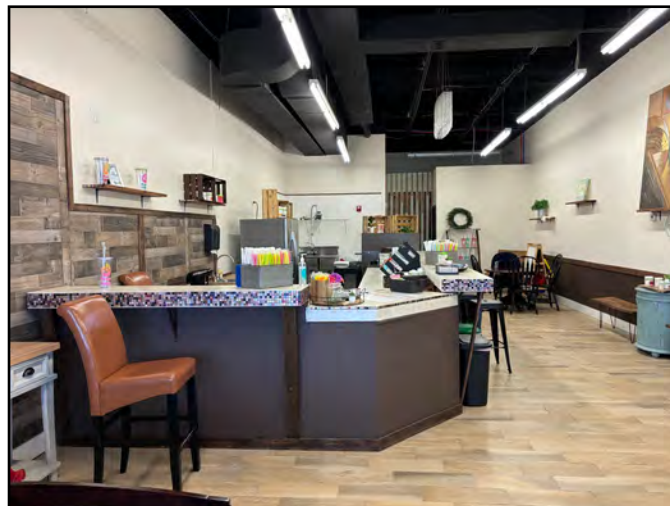
- 2nd generation cafe space available
- Drive-thru end cap available with stacking lane
- Great visibility on 135th Street across from Menards, Whataburger and Andy's Frozen Custard
- On the Olathe side of 135th bordering Overland Park, KS

 [CLICK HERE TO VIEW MORE LISTING INFORMATION](#)

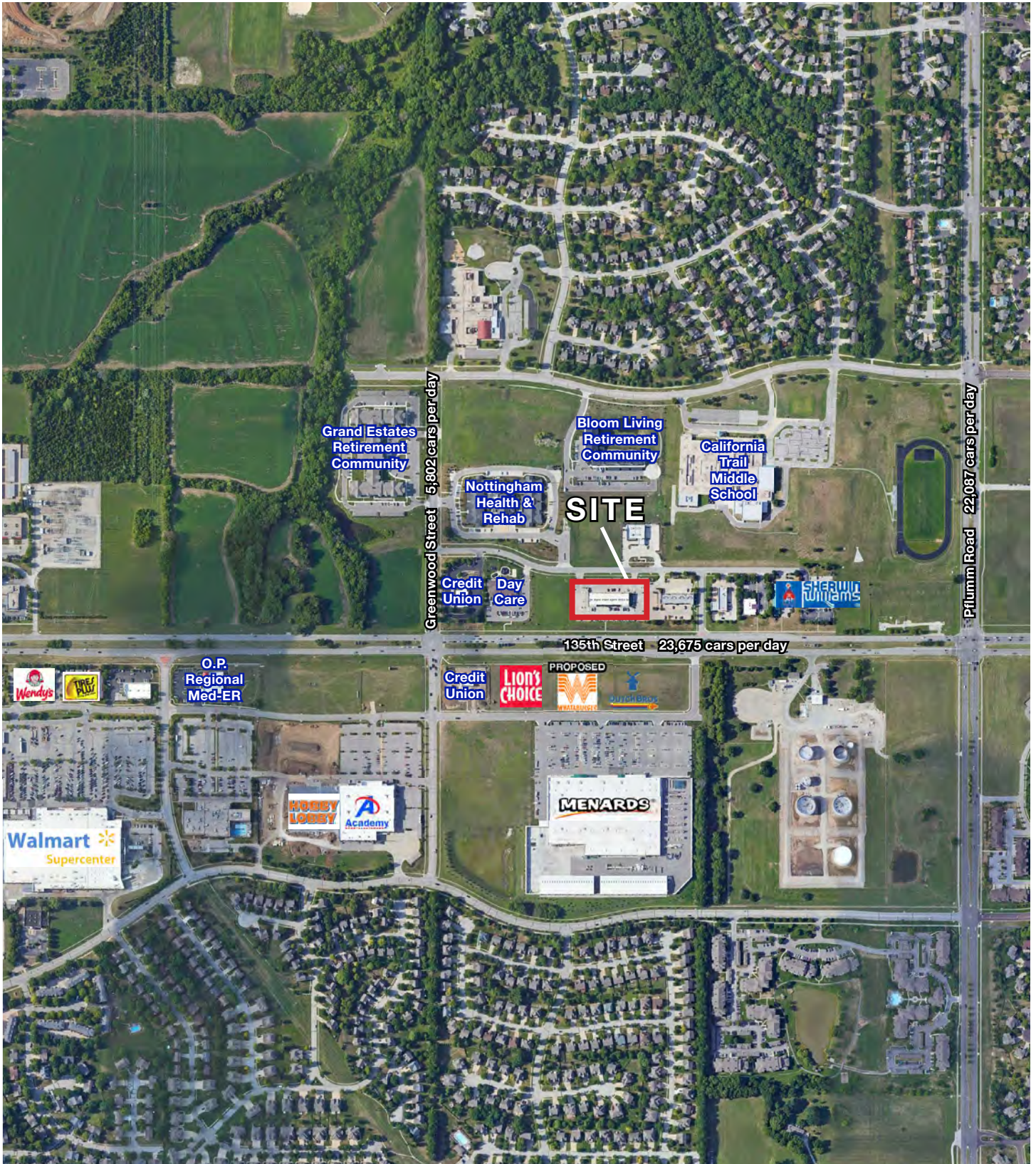
For More Information Contact: *Exclusive Agent*
GARRETT COHOON | 816.412.7315 | gcohoon@blockandco.com



PHOTOS



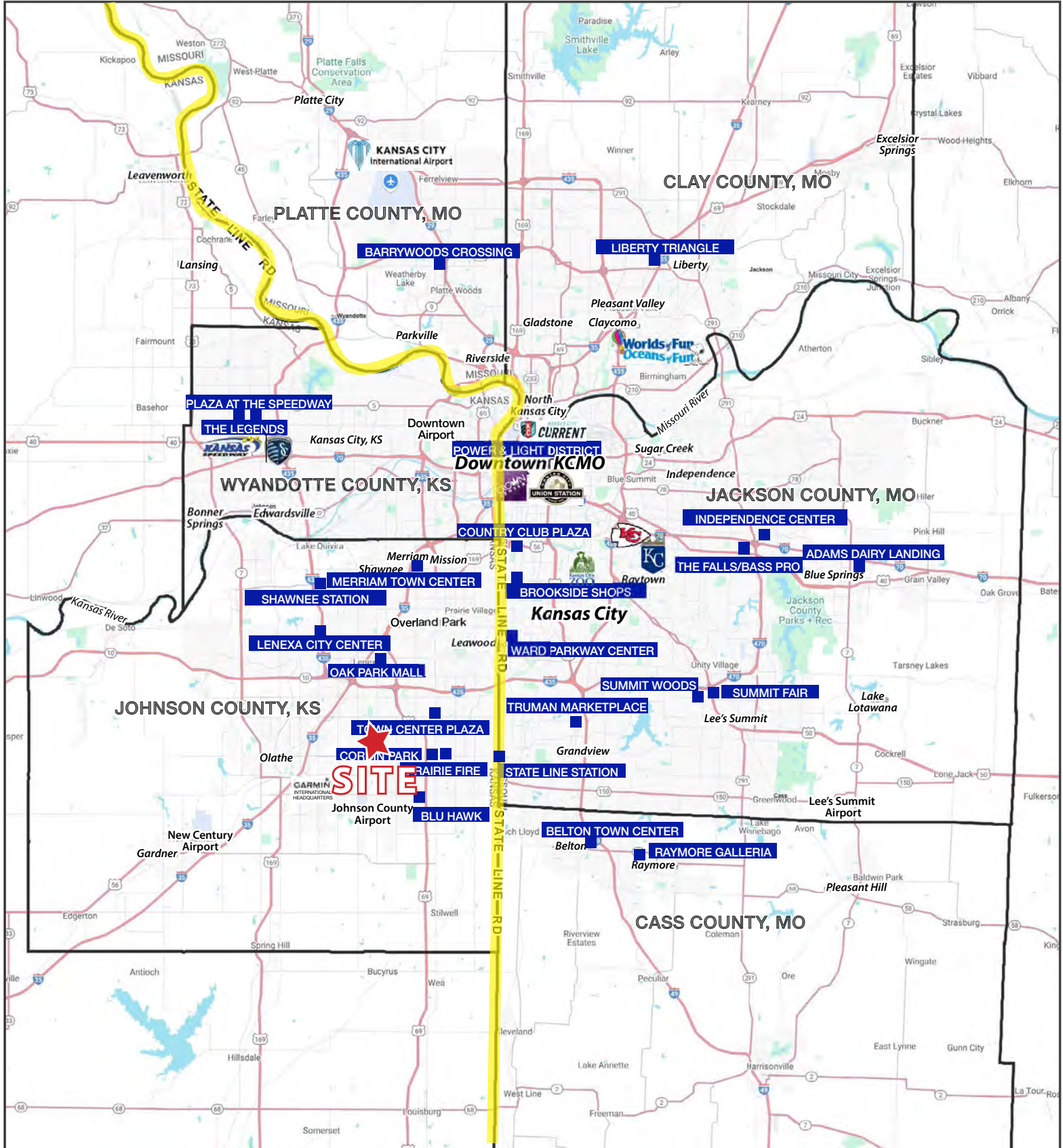
AERIAL





SHOPS OF SEDONA SPACE FOR LEASE

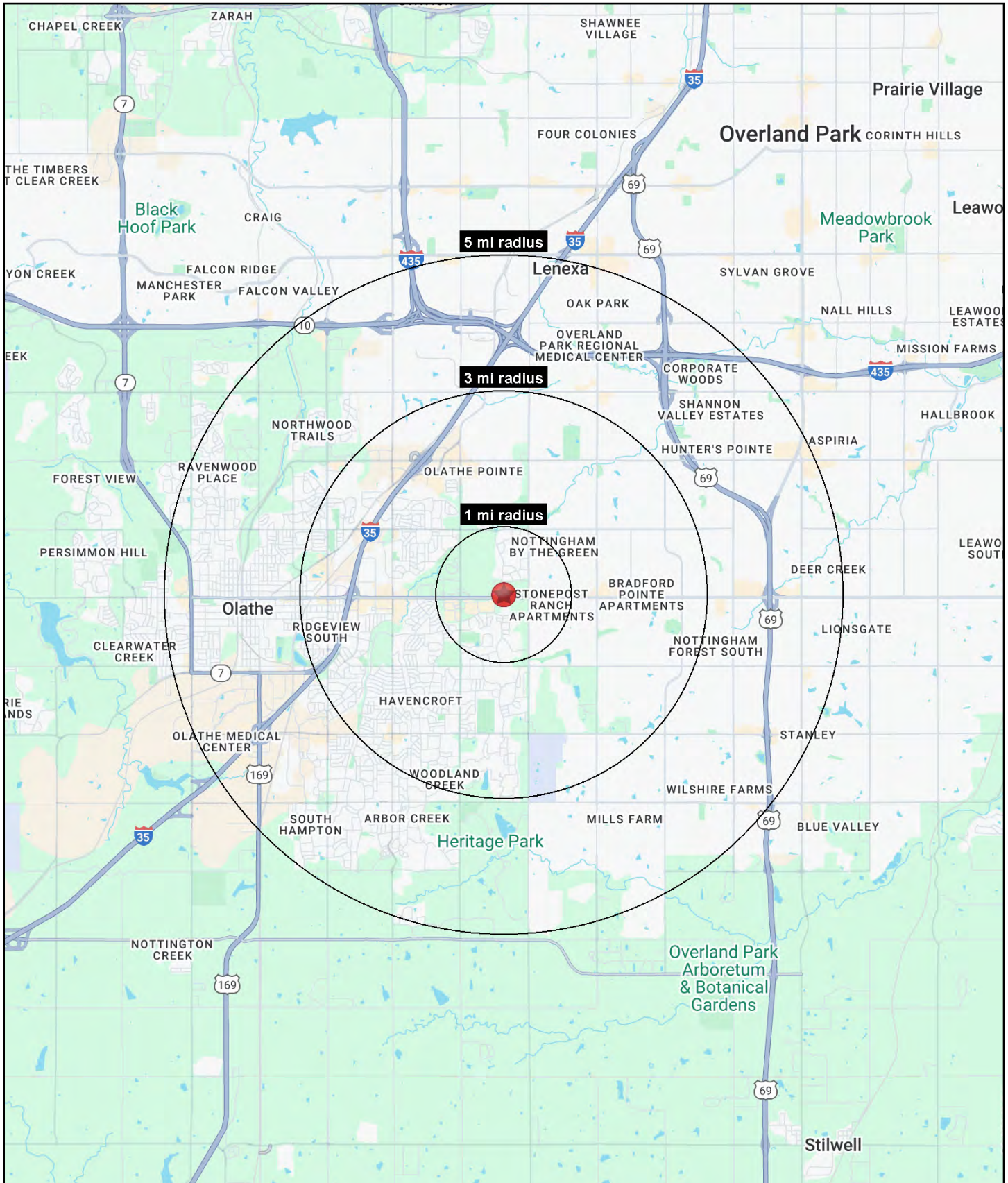
14000-14030 & 14100-14138 W. 135th Street, Olathe, KS





SHOPS OF SEDONA SPACE FOR LEASE

14000-14030 & 14100-14138 W. 135th Street, Olathe, KS





SHOPS OF SEDONA SPACE FOR LEASE

14000-14030 & 14100-14138 W. 135th Street, Olathe, KS

14100 W. 135th Street Olathe, KS 66062	1 mi radius	3 mi radius	5 mi radius
Population			
2025 Estimated Population	11,606	99,777	235,324
2030 Projected Population	11,717	98,780	239,151
2020 Census Population	13,095	101,867	226,409
2010 Census Population	9,821	94,467	202,023
Projected Annual Growth 2025 to 2030	0.2%	-0.2%	0.3%
Historical Annual Growth 2010 to 2025	1.2%	0.4%	1.1%
2025 Median Age	38.2	37.0	37.3
Households			
2025 Estimated Households	4,600	38,136	91,393
2030 Projected Households	4,730	38,466	94,861
2020 Census Households	4,351	37,226	85,529
2010 Census Households	3,281	34,199	75,613
Projected Annual Growth 2025 to 2030	0.6%	0.2%	0.8%
Historical Annual Growth 2010 to 2025	2.7%	0.8%	1.4%
Race and Ethnicity			
2025 Estimated White	77.9%	76.4%	75.9%
2025 Estimated Black or African American	4.8%	6.3%	6.1%
2025 Estimated Asian or Pacific Islander	10.4%	6.7%	8.1%
2025 Estimated American Indian or Native Alaskan	0.2%	0.3%	0.3%
2025 Estimated Other Races	6.7%	10.2%	9.6%
2025 Estimated Hispanic	6.8%	10.4%	9.9%
Income			
2025 Estimated Average Household Income	\$179,012	\$144,461	\$144,018
2025 Estimated Median Household Income	\$130,255	\$114,580	\$116,776
2025 Estimated Per Capita Income	\$71,003	\$55,295	\$56,008
Education (Age 25+)			
2025 Estimated Elementary (Grade Level 0 to 8)	0.8%	1.5%	1.7%
2025 Estimated Some High School (Grade Level 9 to 11)	1.6%	2.1%	2.5%
2025 Estimated High School Graduate	11.3%	13.4%	13.5%
2025 Estimated Some College	16.5%	19.1%	17.3%
2025 Estimated Associates Degree Only	5.0%	7.5%	7.2%
2025 Estimated Bachelors Degree Only	43.1%	35.2%	35.1%
2025 Estimated Graduate Degree	21.6%	21.3%	22.7%
Business			
2025 Estimated Total Businesses	268	2,836	9,027
2025 Estimated Total Employees	2,160	33,297	141,071
2025 Estimated Employee Population per Business	8.1	11.7	15.6
2025 Estimated Residential Population per Business	43.3	35.2	26.1

©2025, Sites USA, Chandler, Arizona, 480-491-1112 Demographic Source: Applied Geographic Solutions 5/2025, TIGER Geography - RS1

